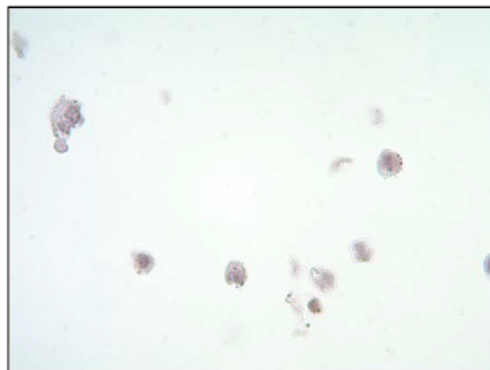
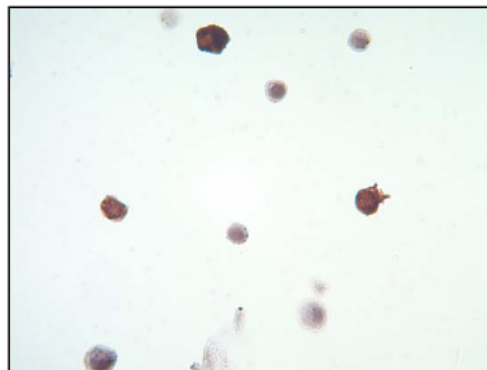


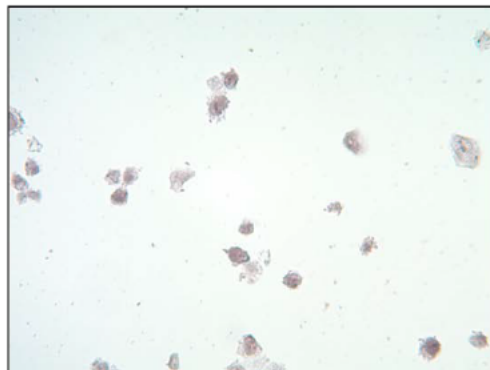
We have extensively characterized the **unnamed commercial** antibody against human **unnamedmarkerx**. We initially tested the antibody on **unnamedmarkerx** over expressing human prostate cancer cells that were formalin fixed, paraffin embedded, sectioned and stained by IHC. We also tested our antibody by immunoblotting on **unnamedmarkerx** over expressing cells compared to vector alone over expressing cells. Immunoblotting detects from 0-3 non-specific bands depending on the prostate cancer cell line. Thus we tested our antibody on xenografts from these prostate cancer cell lines and determined that this antibody does not detect these non-specific proteins by IHC.



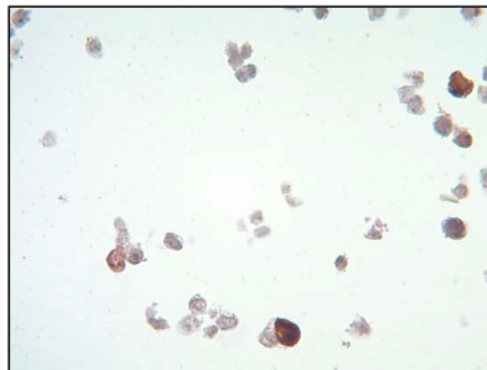
PC3 empty vector 1:400



PC3 **unnamedmarkerx** 1:400



22RV1 empty vector 1:400

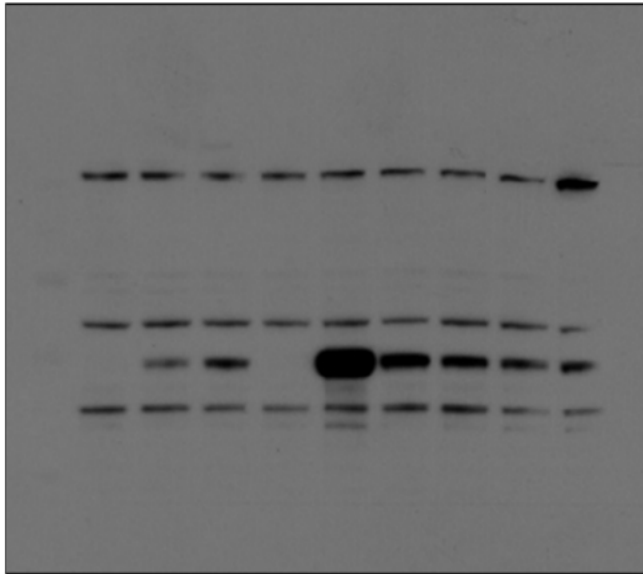


22RV1 **unnamedmarkerx** 1:400

Sigma Prestige Antibody: **unnamedmarkerx**

*FFPE Prostate Cancer cells

HEK 293 cells



Empty Vector
■ Origene
■ Origene
Empty Vector
■ OpenBio
■ Origene
■ Origene
■ Origene
■ OpenBio

