

Contact us at:
query@prostatebiorepository.org

Coordinating Center:
Johns Hopkins University (JHU)

Network Sites:

Johns Hopkins University (JHU)



New York University (NYU)
School of Medicine



Memorial Sloan Kettering Cancer Center
(MSKCC)



The University of Washington (UW)



Washington University (WU) in
St. Louis School of Medicine



Network Sites

Principal Investigators:

Bruce Trock, Ph.D.
btrock@jhmi.edu



Angelo De Marzo, M.D., Ph.D.
ademarz@jhmi.edu



Karen Sfanos, Ph.D.
ksfanos@jhmi.edu



Bettina Drake, Ph.D.
drakeb@wudosis.wustl.edu




Anuradha Gopalan, M.D.
GopalanA@mskcc.org



Jonathan Melamed, M.D.
jonathan.melamed@nyumc.org



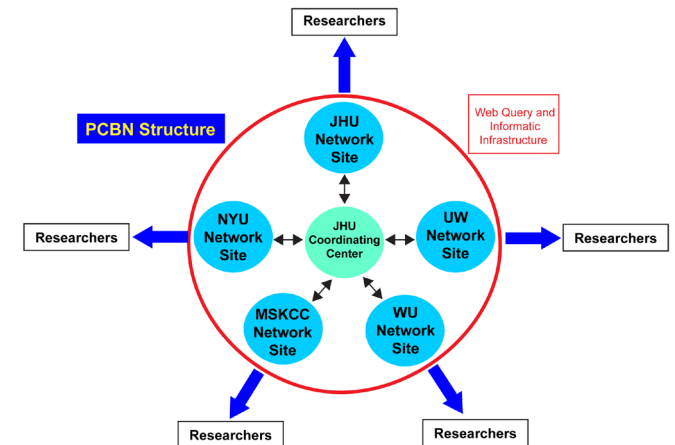
Colm Morrissey, Ph.D.
cmorriss@uw.edu



**Prostate Cancer
Biorepository Network
(PCBN)**

We provide tissue and other
biospecimens to all prostate cancer
investigators!

Visit us at:
www.prostatebiorepository.org



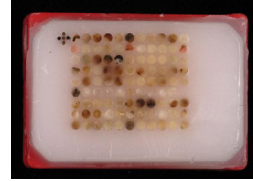
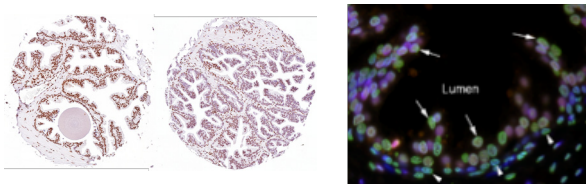


The Prostate Cancer Biorepository Network (PCBN) is a Department of Defense (DOD)/ Congressionally Directed Medical Research Program (CDMRP) bioresource that provides high quality, well-annotated tissue and other biospecimens to all prostate cancer investigators. Specimens are linked to clinical follow-up and other metadata. This biorepository is a collaboration of network sites at five academic institutions.

Available Specimens

To find a full listing of specimens available through the PCBN please visit: prostatebiorepository.org/specimens

- Tissue Microarrays (TMAs)
- Prostatectomy Tissues
- Body Fluids
- Derived Specimens (DNA, RNA and protein)



TMAs (Partial List)

- Patients with versus without biochemical recurrence (BCR) followed for metastasis
- Matched (on grade/stage/age) African American and Caucasian patients
- Hormone naïve vs hormone refractory patients
- Matched primary tumor and lymph node metastases
- Metastasis from rapid autopsy
- LuCaP PDX models

Other Specimen Types

- Frozen Tissue
 - Radical Prostatectomy
 - Seminal Vesicles
- FFPE Tissue
 - Radical Prostatectomy
 - Transurethral Resection of the Prostate (TURP)
 - Suprapubic Prostatectomy
 - Metastasis Resections

Other Specimen Types

- Derivatives
 - DNA
 - RNA
 - Protein
- Body Fluids
 - Serum
 - Plasma
 - Buffy Coat
 - Prostatic Fluid
 - Seminal Vesicle (SV) Fluid

Currently Accruing Important Research Specimens Including:

- Metastatic tissue from rapid autopsy
- Serum or plasma (pre- and/or post-treatment) from CRPC patients
- Post-neoadjuvant therapy prostatectomy frozen and FFPE tissue
- Longitudinal samples from men on active surveillance

PCBN also Performs:

Biospecimen science research such as determining optimal methods for RNA extraction, influence of slides storage temperature on RNA quality